

# LED Light Tape

## INSTRUCTION MANUAL



### INTRODUCTION

Thank you for your purchase! GleamBeam products enhance the appearance and enjoyment of any indoor space. Our LED Light Tape is easy to install and will provide you with years of energy-efficient ambient lighting.

### LED LIGHT TAPE + CONTROLLER SET

This package includes a remote control for changing the color and intensity of your lighting. You can operate two independent LED Light Tape strips (up to 10 meters or 32.8 feet in total) using the same power source and controller.

### INCLUDED IN THE BOX

- 5-meter reel of LED light tape
- 1 roll of double-sided adhesive foam tape
- Cleaning wipes
- Clips with adhesive tape
- Infrared controller
- Infrared remote (battery included)
- Power adapter (US plug)
- Instruction manual
- Warranty slip

### SPECIFICATIONS

- Model number: 30616
- SMD 5050 RGB LEDs
- 30 LEDs per meter
- Power Adapter + US Plug: DC 12V 2A
- Certifications: FCC-SDOC, CE EMC, ROHS, IEC62471, CE Power Adapter
- Water Resistance: Light Tape is IP 65



### INFRARED REMOTE

BRIGHTNESS/DIMMER

POWER BUTTONS



LIGHT MODE  
OPTIONS  
(Flash / Strobe /  
Fade / Smooth)

COLOR SELECTION PAD

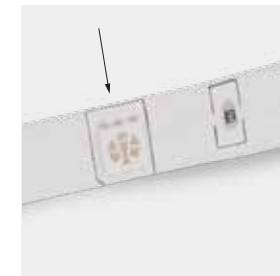
### REMINDER

REMOVE THE INSULATING PULL TAB BEFORE  
USING THE REMOTE.

### LED LIGHT TAPE REEL



Cut Line



LEDs



Copper Plating



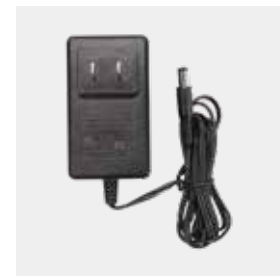
Connector Plugs



Infrared Controller



Receiver



Power Adapter and Plug

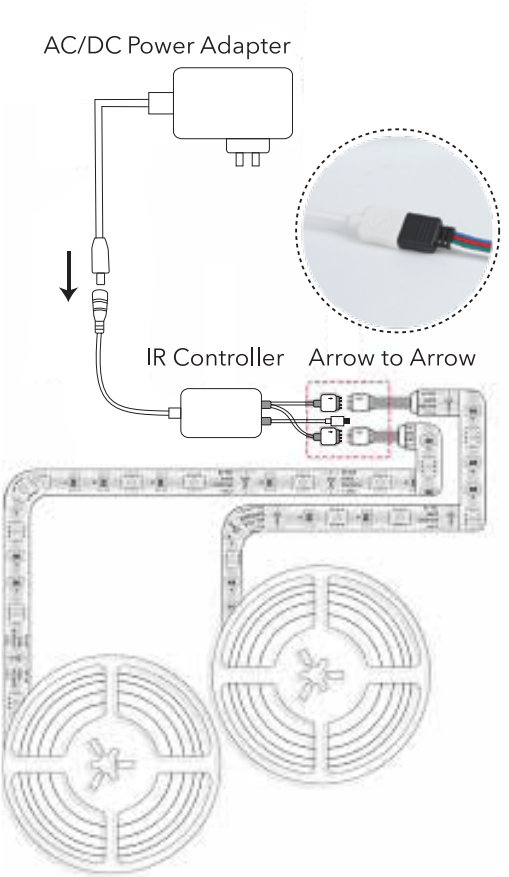
## INSTALLATION GUIDE

1. Ensure the surface area where you are attaching the LED Light Tape is clean. Use the provided wipes.
2. With the LED Light Tape reel in hand, pull out the length you need.
3. Cut the LED Light Tape at the designated cut line closest to your required length. Make sure to cut straight up and down along the designated cut line as shown.

 **The LED Light Tape MUST BE UNPLUGGED from its power source before making any cuts. Once cut, they cannot reconnect.**

4. Peel back the protective backing on the LED Light Tape.
5. Apply the sticky side of the LED Light Tape to the surface of the object. Smooth it down flat with your hand as you apply it across.
6. Attach the LED Light Tape to the controller using the connector plugs. Make sure the arrows line up correctly.
7. Plug in the power adapter and activate the LED Light Tape using your remote.

*This kit includes a roll of double-sided adhesive tape for repairs should the sticky backing on the LED lights ever come loose. The adhesive clips help prevent the connection wire from drooping.*



## PRECAUTIONS

- Make sure the LED Light Tape is unplugged before making any cut.
- Avoid getting the product wet or using it in damp conditions.
- Do not attempt to modify the power adapter or controller in any way.

## FAQ/TROUBLESHOOTING

### Can I leave my LED Light Tape on all night?

Yes. GleamBeam LED Light Tape generates very little heat and is safe to leave on for extended periods. It also is very energy-efficient compared to your everyday light bulb.

### Why does the LED Light Tape flicker?

Double-check to make sure the connections are secure and that there are no issues with the plug-in. You may experience power flickers if you exceed the maximum amount of LED Light Tape the controller can support (up to 10 meters or just over 32 feet).

## CONTACT

Should you have any issues with this product, please visit: <https://support.gleambeam.com/>



Our customer service team is happy to answer any questions you may have.

