

Seeds	Amount of Seeds per Pod	Cultivation Cycle	Ideal Air Temperature for Planting
Mung Bean	1 seed	1 - 2 days	18°C - 30°C
Peas	1 seed	1 - 2 days	18°C - 30°C
Dwarf Red Cherry Tomatoes	2 - 3 seeds	3 - 5 days	18°C - 30°C
Green Beans	1 - 2 seeds	3 - 5 days	18°C - 30°C
Basil	2 - 3 seeds	4 - 6 days	18°C - 30°C
Green Leaf Lettuce	3 - 5 seeds	4 - 7 days	18°C - 30°C
Mint	5 - 7 seeds	4 - 7 days	18°C - 30°C
Sunflower	3 - 5 seeds	4 - 7 days	18°C - 30°C
Hot Peppers	3 - 5 seeds	4 - 7 days	18°C - 30°C
Rosemary	2 - 3 seeds	6 - 8 days	18°C - 30°C
Dichondra Repens Grass	4 - 6 seeds	4 - 7 days	18°C - 30°C
Red Leaf Lettuce	3 - 5 seeds	5 - 7 days	18°C - 30°C
Gypsophila	3 - 5 seeds	5 - 7 days	18°C - 30°C
Spinach	3 - 5 seeds	5 - 7 days	18°C - 30°C
Cilantro/Coriander	4 - 6 seeds	6 - 8 days	18°C - 30°C
Thyme	4 - 6 seeds	6 - 8 days	20°C - 25°C
Lemon Basil	4 - 6 seeds	6 - 8 days	20°C - 25°C
Wood Forget-Me-Not	4 - 6 seeds	6 - 8 days	20°C - 25°C
Curly Kale	4 - 6 seeds	6 - 8 days	20°C - 25°C
Butterhead Lettuce	4 - 6 seeds	6 - 8 days	20°C - 25°C
Cucumber	2 - 3 seeds	6 - 8 days	20°C - 25°C
Mini Watermelon	2 - 3 seeds	7 - 10 days	20°C - 25°C
Morning Glory	4 - 6 seeds	7 - 10 days	20°C - 25°C
Green Okra	3 - 5 seeds	7 - 10 days	20°C - 25°C
Italian Parsley	4 - 6 seeds	10 days +	20°C - 25°C
Lavender	4 - 6 seeds	10 days +	20°C - 25°C
Yellow Okra	4 - 6 seeds	10 days +	20°C - 25°C

The above data is shown for reference only. Your environment may have an impact on how your plants grow and thrive.



**WARNING**

1. Ensure your Dr Goodrow Home Garden is unplugged before making any adjustments.
2. Do not allow water to contact the hot LED growth lamp or any cords.
3. Parental supervision is advised. This growing system is not a toy.
4. Never operate your Dr Goodrow Home Garden if you find a damaged cord or plug, if it has been dropped/damaged, or if it has been dropped in water.
5. Standard USB adapters below 5V will not work.

**CUSTOMER SERVICE**

If you have any inquiries, please visit:  
<http://support.getdrgoodrow.com>  
Scan the QR code below for your convenience:



This device complies with ISED Canada license-exempt RSS standard(s). Operation is subject to the following two conditions: (1) this device may not cause interference, and (2) this device must accept any interference, including interference that may cause undesired operation of the device. The lighting equipment complies with Canadian CAN ICES-005/NMB-005.

Le présent appareil est conforme à la/aux norme(s) CNR d'ISDE Canada applicable(s) aux appareils exempts de licence. Son exploitation est soumise aux deux conditions suivantes : (1) Cet appareil ne doit pas causer de brouillage et, (2) cet appareil doit accepter tout brouillage subi, y compris un brouillage susceptible de compromettre le fonctionnement de l'appareil. Le matériel d'éclairage est conforme à la norme canadienne CAN ICES-005/NMB-005.

**FCC Compliance Statement**

This device complies with Part 15 of the FCC Rules. Operation is subject to the following two conditions: (1) This device may not cause harmful interference, and (2) this device must accept any interference received, including interference that may cause undesired operation.



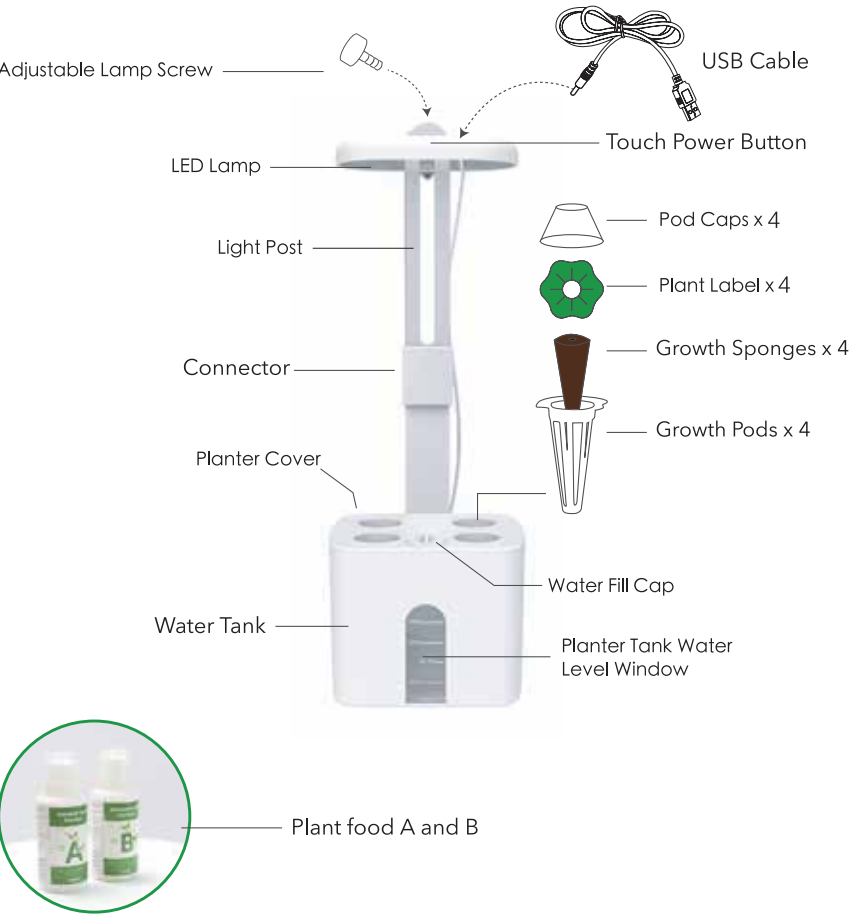
# Mini Home Garden

## INSTRUCTION MANUAL



**Congratulations on the purchase of your new compact home garden grower!** This easy-to-use, space-saving countertop garden provides you with your favorite herbs, flowers, and vegetables for enhancing any dining experience. Enjoy homegrown, organic, GMO-free produce with minimal effort and no mess.

INTRODUCTION



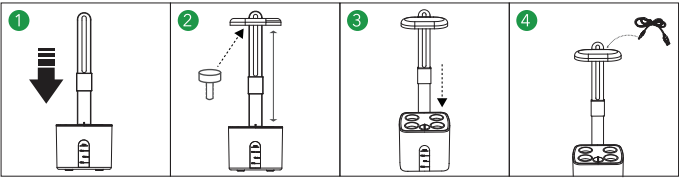
SPECIFICATIONS

Dimensions	135*125*425mm
Power Supply	DC 5V/1A
Power	5W
Water Tank Capacity	1L
Size	4 pods
Product Type	Indoor Garden
LED Light	Full spectrum

ACTIVATING THE LIGHT

- Turn on the light by pressing the Touch Power Button on top of the LED Lamp.
- Your Dr Goodrow works automatically on a daily cycle (16 hours on/8 hours off) to simulate sunlight. This cannot be changed.

INSTALLATION



- Insert the Light Post into the base. Make sure it's inserted firmly and not too loose.
- Attach the LED Lamp on the Light Post with the screw and adjust it to your preferred height. After planting new seeds, start with the LED Lamp at a distance of 8cm (2-3 inches) above the pods. Gradually raise the lamp as the plants begin to grow.
- Put the Planter Cover over the Water Tank.
- Connect the USB Cable to a Power Adapter and connect to the LED Lamp. Fill the water tank with 1L of pure water. Replace the Water Fill Cap

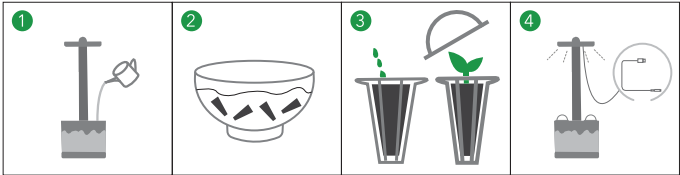
- Fill plant food A and B with pure water then shake to dissolve.



WATER/NUTRIENT PROPORTIONS

Water	400ml	600ml	800ml	1L
Nutrient	Plant food A: 2ML + B: 2ML	Plant food A: 3ML + B: 3ML	Plant food A: 4ML + B: 4ML	Plant food A: 5ML + B: 5ML

PLANTING



- Add water into the water tank (purified is best). For best results, do not exceed 1 liter, as your plants may drown as there is not enough air. It's best to change the water every 1-2 weeks.
- Soak the growth sponges before putting the seeds in.
- Add about 2-4 seeds per growth sponge to improve the germination rate. After covering them with the pod caps, your seeds should germinate within 1-2 weeks. Please note that not all seeds may germinate and some may not be suitable for hydroponic growth with Dr Goodrow (Seeds are sold separately).
- Plug in your Dr Goodrow, turn it on, and it will do the rest!