

BLX™
TRUE WIRELESS BLUETOOTH® EARBUDS



USER MANUAL

V1

THANK YOU
For choosing BLXBuds!



Listen to music and take calls without getting tied up in a bunch of wires.

BLXBuds are true wireless earbuds that use Bluetooth® 5.1 to seamlessly connect with your phone or other compatible devices. Enjoy hours of music, hands-free calls, and crystal-clear audio thanks to BLXBuds' advanced audio engineering.

Please read this user manual before using your new wireless earbuds. Make sure to keep this document for future reference.

01

WHAT'S INCLUDED

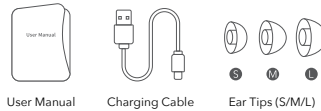


Earbuds:

- ① Ear tip
- ② Touch control
- ③ LED indicator

Charging case:

- ④ Type-C charging port
- ⑤ LED digital display



User Manual Charging Cable Ear Tips (S/M/L)

02

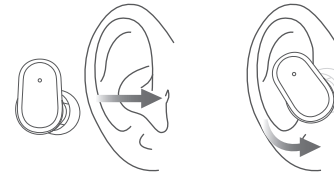
QUICK USE GUIDE

Please remember to fully charge the earbuds and case before first use. Full charge in approximately 72 minutes.

IMPORTANT: Please remove the charging pin protective film before use!

How to wear

Insert the earbuds into your ears and adjust them for a snug and secure fit.

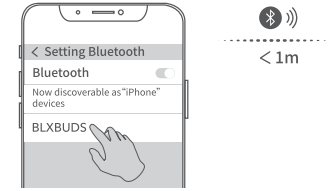


How to pair

1. Once you open the charging case and remove the earbuds, the left and right earbuds will automatically pair with each other.

03

2. Turn on Bluetooth and select "BLXBUDS" from the list of Bluetooth devices.

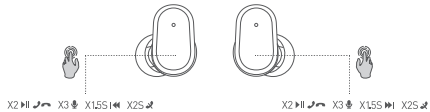


Auto pairing

1. Remove the earbuds from the case, and they will automatically connect back to the last Bluetooth device used.
2. When the earbuds are out of range and disconnected from the device, they will automatically reconnect after they return to range within 1 minute.

04

TOUCH GESTURES



- Left:**
Play/Pause/Answer
Hang up x2
Voice assistant (Siri) x3
Long press 1.5s: Previous song
Long press 2s: Reject
- Right:**
Play/Pause/Answer
Hang up x2
Voice assistant (Siri) x3
Long press 1.5s: Next song
Long press 2s: Reject

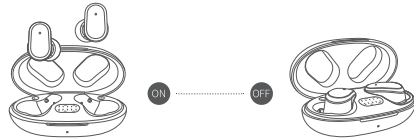
CHARGING

- Charging the case:**
- 🔦 Flashing LED digital display - charging
 - 💡 Solid LED digital display and displayed 100 - fully charged
- Charging the earbuds:**
- 💡 Solid red light - charging
 - 🔦 Solid blue light for 15 seconds then turns off - fully charged

Full charge in approximately 72 minutes

05

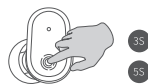
AUTO ON/ OFF



1. Remove the earbuds from the case and they'll automatically power on.
2. Place the earbuds back into the case and they'll automatically power off.

MANUALLY ON/OFF

1. Press and hold the touch control for 3 seconds to power on.
2. Press and hold the touch control for 5 seconds to power off.



WARNING

1. To prevent injury to hearing, do not listen for extended periods of time at high volume.
2. For traffic safety, do not use earbuds while driving or cycling.
3. The earbuds can only be charged with a 5V charger.
4. Do not expose the earbuds to high temperatures or sunlight for long periods of time.
5. The storage temperature of the earbuds is -20°C to 40°C.
6. Please fully charge the earbuds for long-term storage, and ensure they are charged every 3 months.

Before using the earbuds, please remove the protective film, place them into the charging case, and charge until full.

07

SPECIFICATIONS

Model: 30888/30889
BT Version: V5.1
Input Voltage: DC5V
Battery Capacity: 35*2mAh/250mAh
BT Frequency Range: 2.402-2.480GHz
Audio Frequency: 20Hz-20KHz
Drivers Size: Ø10mm
Transmission Range: 10m
Sensitivity: 103dB±3dB
Playback Time: About 6 hours
Charging Time: About 72 minutes

GET IN TOUCH

Thank you for choosing BLXBuds!

Have any questions about our products? You can contact our helpful customer service team by going to <https://support.blxbuds.com> or by scanning the QR code on the right. We're always happy to help!



Activate your warranty at <https://www.blaux.com/warranty-registration.html>

08



FCID: 2AX4F-30888
IC: 27073-30888
HVIN: 30888
WEEE-Reg.-Nr. DE25739568
This device complies with Industry Canada licence-exempt RSS standard(s). Operation is subject to the following two conditions: (1) This device may not cause interference, and (2) this device must accept any interference, including interference that may cause undesired operation of the device. This Class [B] digital apparatus complies with Canadian ICES 003. This equipment complies with Canada radiation exposure limits set forth for uncontrolled environments. This transmitter must not be co-located or operating in conjunction with any other antenna or transmitter.

At the end of its service life, this product may not be disposed of in the normal household waste, but rather must be disposed of at a collection point for recycling electrical and electronic devices. The materials are recyclable according to their labelling. You make an important contribution to protecting our environment by reusing, recycling, or utilizing old devices in other ways. Please ask the municipal administration where the appropriate disposal facility is located.

FCC This device complies with Part 15 of the FCC Rules. Operation is subject to the following two conditions: (1) This device may not cause harmful interference, and (2) this device must accept any interference received, including interference that may cause undesired operation. Caution: The user is cautioned that changes or modifications not expressly approved by the party responsible for compliance could void the user's authority to operate the equipment. Note: This equipment has been tested and found to comply with the limits for a Class B digital device, pursuant to part 15 of the FCC Rules. These limits are designed to provide reasonable protection against harmful interference in a residential installation. This equipment generates, uses and can radiate radio frequency energy and, if not installed and used in accordance with the instructions, may cause harmful interference to radio communications. However, there is no guarantee that interference will not occur in a particular installation. If this equipment does cause harmful interference to radio or television reception, which can be determined by turning the equipment off and on, the user is encouraged to try to correct the interference by one or more of the following measures: -Reorient or relocate the receiving antenna. -Increase the separation between the equipment and receiver. -Connect the equipment into an outlet on a circuit different from that to which the receiver is connected. -Consult the dealer or an experienced radio/TV technician for help. This equipment complies with FCC's RF radiation exposure limits set forth for an uncontrolled environment. End user must follow the specific operating instructions for satisfying RF exposure compliance. This transmitter must not be co-located or operating in conjunction with any other antenna or transmitter.

Bluetooth® is a registered trademark owned by Bluetooth SIG, Inc. and use of it by our company is licensed. Other third party trademarks belong to their respective owners.