

5. Screw the T-Adapter into the bottom of the tank. The threaded extension in the middle needs to stay pointed
6. out (not facing the wall).
7. Connect one end of the supplied connector/hose to the threaded middle extension of the T-Adapter.
Screw the other end of this supplied connector/hose to the threaded cold water intake located underneath
8. the Blaux Cleanse control knob.
9. Connect the loose end of the hose coming out of the bathroom wall into the bottom of the T-Adapter.
10. Double-check to make sure all the threaded connections are secure.
Twist the water valve for the toilet all the way to the left (counterclockwise) to turn the water back on.

CAUTION: Be cautious testing the bidet for the first time. The water is designed to spray out with a good amount of pressure. If no one is seated on the bowl and the control knob is activated, the water could spray out onto the floor.

Using the Blaux Cleanse Control Knob

- When seated on the bowl, the control knob will be located to your right.
- If you wish to activate the front wash, twist the knob in increments to the right.
- If you wish to activate the rear wash, twist the knob in increments to the left.
- You have 4 levels of water pressure to choose from, ranging from low to high.
- When you feel you are clean, twist the control knob back to the red center position to shut it off.

New User FAQs:

Q. Do I still need toilet paper?

- A.** With a Blaux Cleanse installed, you won't require as much. We recommend giving yourself a quick wipe with toilet paper before activating the spray. You'll also need a little to dry off your bottom. Some of your guests may feel more comfortable relying on old-fashioned TP, so it's always good to have a supply on hand.

Q. How long should I spray for?

- A.** It's all a matter of personal preference. Most people say anywhere between 20 and 60 seconds is long enough to get the job done.

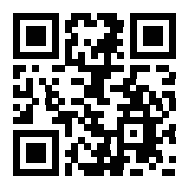
Q. What if the spray doesn't hit all the right spots?

- A.** You may have to readjust your body slightly on the bowl for the best cleaning experience. It won't take long to find the correct position.

Contact Us

Should you have any further questions about this product, please visit or scan the QR code:

<https://support.blauxstore.com>



CLEANSE

Bidet Toilet Attachment

INSTRUCTION MANUAL



BLAUX 

Thank you for your purchase!

Thanks for choosing Blaux Cleanse. In addition to cost-savings, bidets are eco-friendly and hygienic for all. Enjoy a refreshing sensation and a more thorough clean every time you sit on the toilet. By installing a **Blaux Cleanse**, you'll be doing your part to reduce the amount of wasteful product being flushed into our sewers.

Includes

- Blaux Cleanse bidet
- Connector/hose (0.7m/2.3 ft)
- Washers
- T-Adapter
- Instruction manual

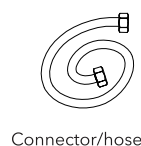
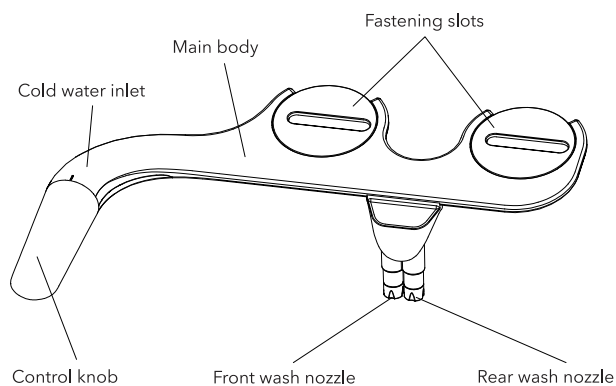
You will also need

- Phillips head screwdriver
- Adjustable wrench
- Bowl or small container
- Cloth towel
- Plumber's tape
- Disinfectant wipes, toilet cleaner

Parts

- Cold water inlet
- Control knob
- Main body
- Fastening slots

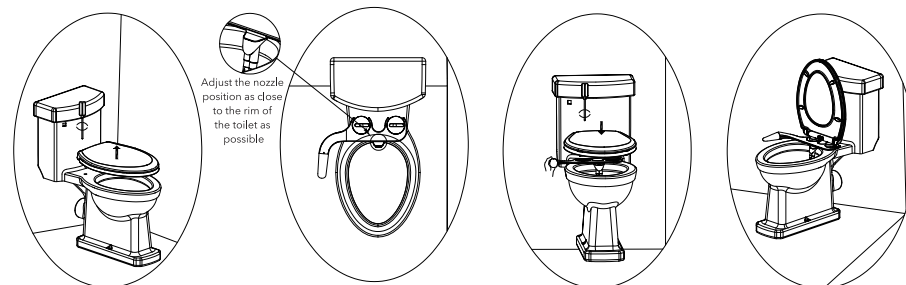
- Front wash nozzle
- Rear wash nozzle
- T-Adapter
- Connector/hose



T-Adapter

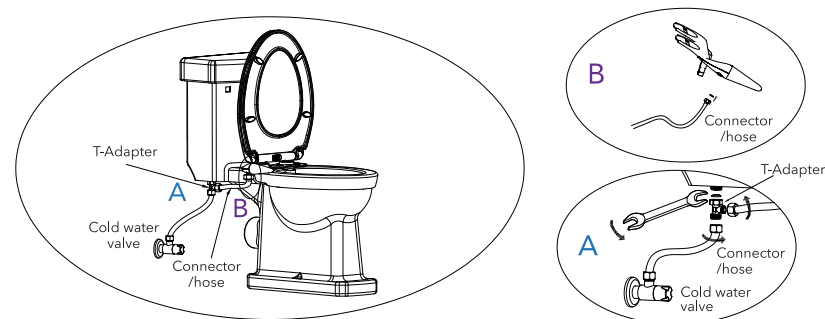
Material: ABS Plastic

Installing the Blaux Cleanse



1. Lift up the toilet seat caps. Remove the toilet lid by unscrewing the hardware. You may have to grip the wingnut underneath to loosen.
2. Once the toilet seat is removed, wipe off the top of the bowl to remove any residue.
3. Place the Blaux Cleanse flat on top of the back of the bowl. The control knob should be on the right side of the bowl when you are seated.
4. Adjust the fastening slots evenly over top of the toilet seat mounting holes.
5. Center the spray nozzles along the back rim of the toilet.
6. Position the toilet seat on top of the Blaux Cleanse so the mounting holes are visible.
7. Reattach the toilet seat using the appropriate hardware. The toilet seat and Blaux Cleanse should not shift when secured properly.

Hooking Up the Water



1. Shut off the water by using the cold water valve on the wall behind the toilet. Twist it all the way to the right (clockwise).
2. Flush the toilet. Wait for the water in the tank to drain. Pop off the tank lid to make sure it is empty.
3. Unscrew the connector/hose from the tank. Make sure you have a towel or a bowl to catch any water that may leak out.
4. Wrap plumber's tape around all the threaded parts to prevent leaks.

CAUTION: Do not use a wrench to overtighten any of the treaded ends. Twisting by hand should be adequate.